

## SYSTEM DESCRIPTION

Showertec Linear is a range of linear channels, 100% made in Italy, for floor-level, barrier-free showers. The channel is made of three elements: **Body** (channel body), **Cover** (removable and adjustable grids), and **Frame** (optional). This feature boosts aesthetic combinations, as Cover and Frame are two separate elements, which can be combined. To complete the system, you'll find the **Tray that is pre-sloped (2% slope)**, available in several sizes. Ready to be tiled.

## SHOWERTEC LINEAR - STL-C\*

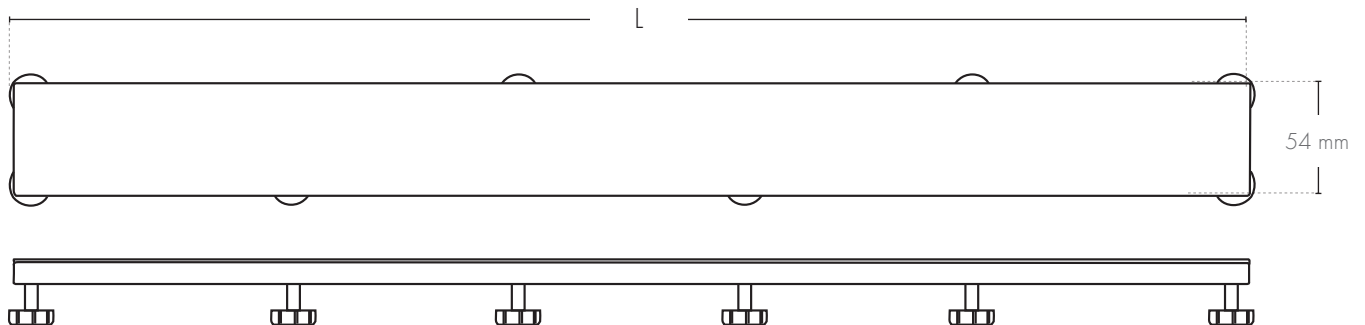
### PRODUCT DESCRIPTION



**Cover Metal STL-C\*** cover is the grid of the Showertec Linear system. The base is available in **12** high-strength **ALU+** Aluminum versions and **4** **AISI 316 stainless steel** versions. It is equipped with adjustable feet for proper leveling of the Cover with the surrounding flooring. The system's versatility in regulation allows the installation of the surrounding covering with tiles from **6 to 20 mm** thick. The cover's pedestal rest on the support areas of the **STL-B\*** channel body: their position is conceived to increase the resistance to the Cover's loads without reducing the system's drain capacity.

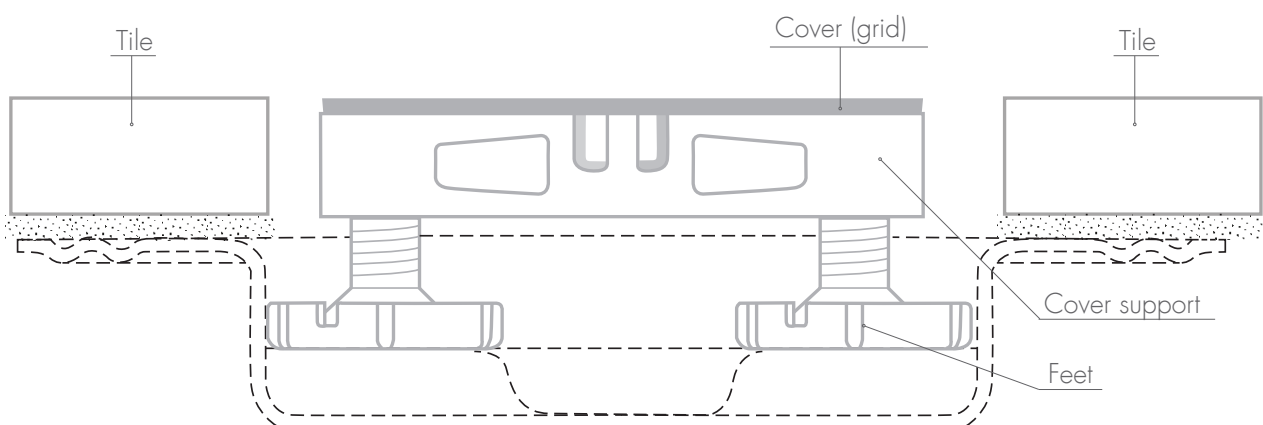
The **STL-C\*** cover is designed for linear channels in the Showertec Linear STL system, available in sizes 600, 700, 800, 900, 1000, and 1200 mm.

### TECHNICAL DRAWINGS STL-C\*



STL-C\*, Cover Metal

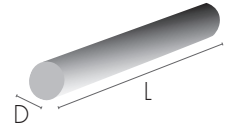
L = Available lengths: 600 mm / 700 mm / 800 mm / 900 mm / 1000 mm / 1200 mm



**STL-C\* CODE - STAINLESS STEEL AISI 316**

Article	Length (mm)	Description	pc ■	Pkg DxD (mm)
STL-C 600 *	600	Cover in Stainless Steel AISI 316- *ILM/*ISM/*IXM/*IC	1 pc	ø90 x 630
STL-C 700 *	700	Cover in Stainless Steel AISI 316- *ILM/*ISM/*IXM/*IC	1 pc	ø90 x 730
STL-C 800 *	800	Cover in Stainless Steel AISI 316- *ILM/*ISM/*IXM/*IC	1 pc	ø90 x 830
STL-C 900 *	900	Cover in Stainless Steel AISI 316- *ILM/*ISM/*IXM/*IC	1 pc	ø90 x 930
STL-C 1000 *	1000	Cover in Stainless Steel AISI 316- *ILM/*ISM/*IXM/*IC	1 pc	ø90 x 1030
STL-C 1200 *	1200	Cover in Stainless Steel AISI 316- *ILM/*ISM/*IXM/*IC	1 pc	ø90 x 1230

Available finishes: \*ILM = Polished / \*ISM = Brushed / \*IXM = Sanded / \*IC = Chrome



**STL-C\* CODE - ALUMINUM ALU+**

**ANODIZED ALUMINUM ALU+**

Article	Length (mm)	Description	pc ■	Pkg DxD (mm)
STL-C 600 *	600	Cover in Anodized Aluminum Alu+ - *AT/*AR/*AO	1 pc	ø90 x 630
STL-C 700 *	700	Cover in Anodized Aluminum Alu+ - *AT/*AR/*AO	1 pc	ø90 x 730
STL-C 800 *	800	Cover in Anodized Aluminum Alu+ - *AT/*AR/*AO	1 pc	ø90 x 830
STL-C 900 *	900	Cover in Anodized Aluminum Alu+ - *AT/*AR/*AO	1 pc	ø90 x 930
STL-C 1000 *	1000	Cover in Anodized Aluminum Alu+ - *AT/*AR/*AO	1 pc	ø90 x 1030
STL-C 1200 *	1200	Cover in Anodized Aluminum Alu+ - *AT/*AR/*AO	1 pc	ø90 x 1230

Finishes: \*AT = Titan ■ / \*AR = Copper ■ / \*AO = Gold ■

**BRIGHT POLISHED BRUSHED ALUMINUM ALU+**

Article	Length (mm)	Description	pc ■	Pkg DxD (mm)
STL-C 600 *	600	Cover in Bright polished Brushed Alu. *ASSB/*ATSB/*ARSB/*AOSB	1 pc	ø90 x 630
STL-C 700 *	700	Cover in Bright polished Brushed Alu. *ASSB/*ATSB/*ARSB/*AOSB	1 pc	ø90 x 730
STL-C 800 *	800	Cover in Bright polished Brushed Alu. *ASSB/*ATSB/*ARSB/*AOSB	1 pc	ø90 x 830
STL-C 900 *	900	Cover in Bright polished Brushed Alu. *ASSB/*ATSB/*ARSB/*AOSB	1 pc	ø90 x 930
STL-C 1000 *	1000	Cover in Bright polished Brushed Alu. *ASSB/*ATSB/*ARSB/*AOSB	1 pc	ø90 x 1030
STL-C 1200 *	1200	Cover in Bright polished Brushed Alu. *ASSB/*ATSB/*ARSB/*AOSB	1 pc	ø90 x 1230

Finishes: \*ASSB = Chrome ■ / \*ATSB = Titan ■ / \*ARSB = Copper ■ / \*AOSB = Gold ■

**BRIGHT POLISHED ALUMINUM ALU+**

Article	Length (mm)	Description	pc ■	Pkg DxD (mm)
STL-C 600 *	600	Cover in Bright polished Aluminum Alu+ - *AORB	1 pc	ø90 x 630
STL-C 700 *	700	Cover in Bright polished Aluminum Alu+ - *AORB	1 pc	ø90 x 730
STL-C 800 *	800	Cover in Bright polished Aluminum Alu+ - *AORB	1 pc	ø90 x 830
STL-C 900 *	900	Cover in Bright polished Aluminum Alu+ - *AORB	1 pc	ø90 x 930
STL-C 1000 *	1000	Cover in Bright polished Aluminum Alu+ - *AORB	1 pc	ø90 x 1030
STL-C 1200 *	1200	Cover in Bright polished Aluminum Alu+ - *AORB	1 pc	ø90 x 1230

Finishes: \*AORB = Pink Gold ■

**BRUSHED ALUMINUM ALU+**

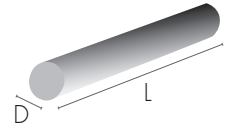
Article	Length (mm)	Description	pc ■	Pkg DxD (mm)
STL-C 600 *	600	Cover in Brushed Aluminum Alu+ - *AGRS/*AMSB	1 pc	ø90 x 630
STL-C 700 *	700	Cover in Brushed Aluminum Alu+ - *AGRS/*AMSB	1 pc	ø90 x 730
STL-C 800 *	800	Cover in Brushed Aluminum Alu+ - *AGRS/*AMSB	1 pc	ø90 x 830
STL-C 900 *	900	Cover in Brushed Aluminum Alu+ - *AGRS/*AMSB	1 pc	ø90 x 930
STL-C 1000 *	1000	Cover in Brushed Aluminum Alu+ - *AGRS/*AMSB	1 pc	ø90 x 1030
STL-C 1200 *	1200	Cover in Brushed Aluminum Alu+ - *AGRS/*AMSB	1 pc	ø90 x 1230

Finishes: \*AGRS = Graphite ■ / \*AMSB = Antique Bronze ■

## POWDER COATED ALUMINUM ALU+

Article	Length (mm)	Description	pc ■	Pkg DxDL (mm)
STL-C 600 *	600	Cover in Powder coated Aluminum Alu+ -*AM11/*A65	1 pc	ø90 x 630
STL-C 700 *	700	Cover in Powder coated Aluminum Alu+ -*AM11/*A65	1 pc	ø90 x 730
STL-C 800 *	800	Cover in Powder coated Aluminum Alu+ -*AM11/*A65	1 pc	ø90 x 830
STL-C 900 *	900	Cover in Powder coated Aluminum Alu+ -*AM11/*A65	1 pc	ø90 x 930
STL-C 1000 *	1000	Cover in Powder coated Aluminum Alu+ -*AM11/*A65	1 pc	ø90 x 1030
STL-C 1200 *	1200	Cover in Powder coated Aluminum Alu+ -*AM11/*A65	1 pc	ø90 x 1230

Finishes: \*AM11 = Matt White  / \*A65 = Embossed Matt Black 



## TECHNICAL FEATURES

**Class K3:** load resistance of the cover >300 kg, according to EN1253 standard

**AASS test:** 1000 hours salt spray test with acetic acid in compliance with ISO9227:2012

## COVER METAL FEATURES AND ADVANTAGES



The covers (grids) are made in **AISI 316 stainless steel**, suitable for environments requiring high-performance materials.



The Aluminum covers (grids) are made with **ALU+ treatment**, which guarantees high corrosion resistance and is commonly used in the naval sector.



Wide range of **finishes** and **colors** for the covers (grids):  
**4** stainless Steel;  
**12** ALU+ aluminum.



**Patented feet** to easily adjust the height of the cover.



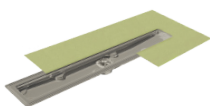
**Metal hook** supplied for an easy lifting of the cover.

## OTHER COMPONENTS

### BODY, FRAME AND TRAY

#### BODY

- Horizontal drain and siphon
- Vertical drain



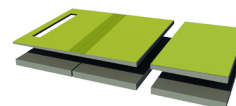
#### FRAME

- Wall frame
- 13 finishes in Steel and Alu+



#### TRAY

- Sloped trays
- Extensions
- Risers
- Ramp



Profilitec S.p.A.  
 Via Scotte, 3 - 36033 Isola Vicentina (Vicenza), ITALY  
 Tel: +39 0444 268311  
 e-mail: profilitec@profilitec.com (ITA)

Profilitec Corp.  
 472 Meeting Street, Suite C, No. 301 -  
 Charleston, SC 29403, USA  
 Ph: +1 855 290 9591  
 e-mail: customerservice@profilitec.com