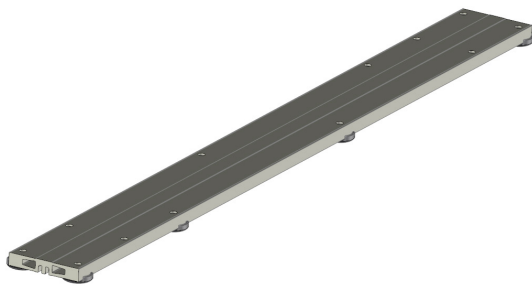


## SYSTEM DESCRIPTION

Showertec Linear is a range of linear channels, 100% made in Italy, for floor-level, barrier-free showers. The channel is made of three elements: **Body** (channel body), **Cover** (removable and adjustable grids), and **Frame** (optional). This feature boosts aesthetic combinations, as Cover and Frame are two separate elements, which can be combined. To complete the system, you'll find the **Tray that is pre-sloped (2% slope)**, available in several sizes. Ready to be tiled.

## SHOWERTEC LINEAR - STL-CT

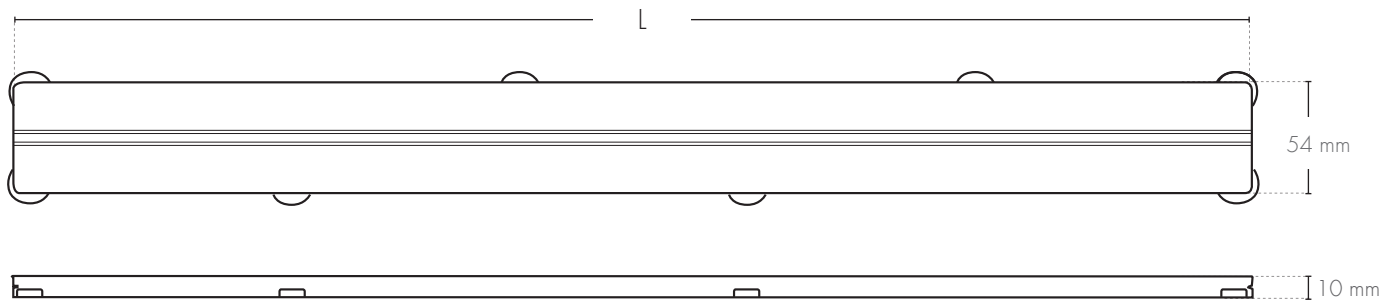
### PRODUCT DESCRIPTION



**Cover invisible STL-CT** is a tileable grid with "invisible" effect. The upper part of the aluminum cover is coated with a specific non-woven fabric that facilitates gluing the tile. The system is equipped with plastic Plastic tab, conceived to rest on the support inlets of the **STL-B\* channel body**; they guarantee uniform support to the cover, increasing the system's stability and load resistance. The support areas positioning allows for the smooth flow of water.

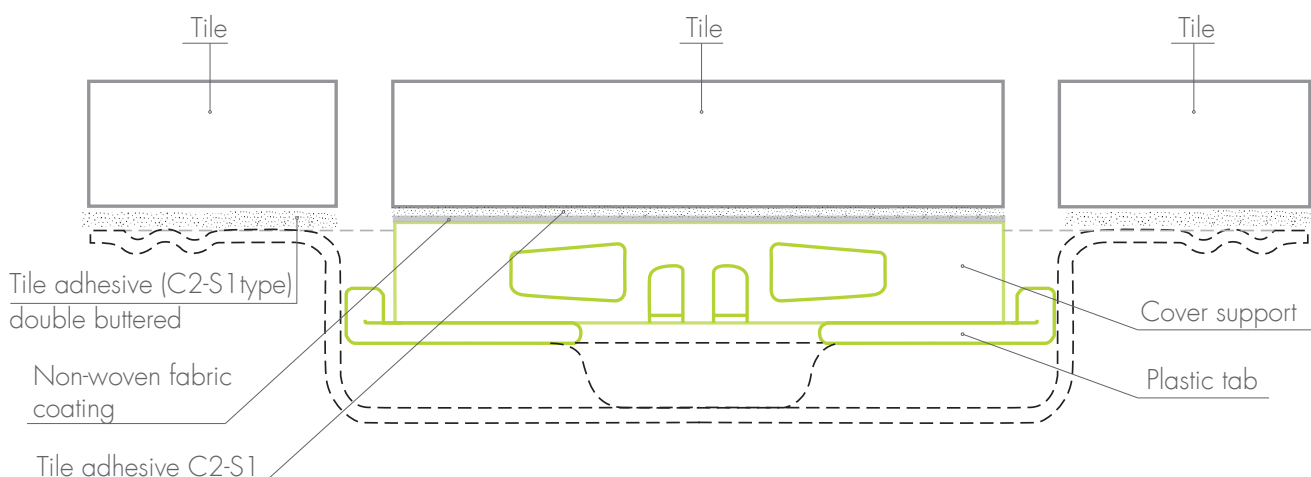
The **STL-CT** cover is designed for linear channels in the Showertec Linear STL system, available in sizes **600, 700, 800, 900, 1000, and 1200 mm**.

### TECHNICAL DRAWINGS STL-CT



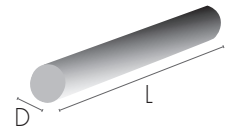
STL-CT, seamless tiled effect cover

L = Available lengths: 600 mm / 700 mm / 800 mm / 900 mm / 1000 mm / 1200 mm



CODE STL-CT

Article	Length (mm)	Description	pc ■	Pkg DxL (mm)
STL-CT 600	600	<b>Fully tileable</b> seamless Cover	1 pc	ø90 x 630
STL-CT 700	700	<b>Fully tileable</b> seamless Cover	1 pc	ø90 x 730
STL-CT 800	800	<b>Fully tileable</b> seamless Cover	1 pc	ø90 x 830
STL-CT 900	900	<b>Fully tileable</b> seamless Cover	1 pc	ø90 x 930
STL-CT 1000	1000	<b>Fully tileable</b> seamless Cover	1 pc	ø90 x 1030
STL-CT 1200	1200	<b>Fully tileable</b> seamless Cover	1 pc	ø90 x 1230



TECHNICAL FEATURES

**Class K3:** load resistance of the cover >300 kg, according to EN1253 standard  
**AASS test:** 1000 hours salt spray test with acetic acid in compliance with ISO9227:2012

COVER INVISIBLE FEATURES AND ADVANTAGES



The Aluminum covers are made with **ALU+ treatment**, which guarantees high corrosion resistance and is commonly used in the naval sector.



The bottom of the channel presents **support areas** for the cover's plastic tab: their position is conceived to increase the resistance to the cover's loads without reducing the system's water flow capacity.



**Minimalist essentiality** with the channel body fully integrated into the floor

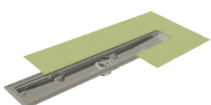


**Tool** supplied for an easy lifting of the cover

OTHER COMPONENTS

BODY, FRAME AND TRAY

**BODY**



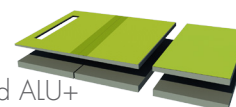
- Horizontal drain and siphon
- Vertical drain

**FRAME**



- Wall frame
- 13 finishes in Stainless Steel and ALU+

**TRAY**



- Sloped trays
- Extensions
- Risers
- Ramp

Profilitec S.p.A.  
 Via Scotte, 3 - 36033 Isola Vicentina (Vicenza), ITALY  
 Tel: +39 0444 268311  
 e-mail: profilitec@profilitec.com (ITA)

Profilitec Corp.  
 472 Meeting Street, Suite C, No. 301 -  
 Charleston, SC 29403, USA  
 Ph: +1 855 290 9591  
 e-mail: customerservice@profilitec.com