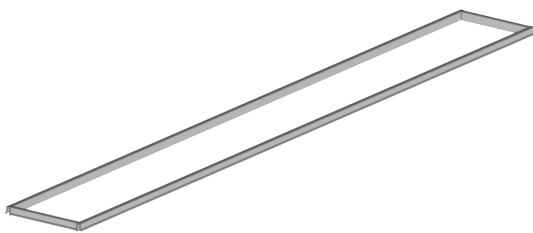


SYSTEM DESCRIPTION

Showertec Linear is a range of linear channels, 100% made in Italy, for floor-level, barrier-free showers. The channel is made of three elements: **Body** (channel body), **Cover** (removable and adjustable grids), and **Frame** (optional). This feature boosts aesthetic combinations, as Cover and Frame are two separate elements, which can be combined. To complete the system, you'll find the **Tray that is pre-sloped (2% slope)**, available in several sizes. Ready to be tiled.

SHOWERTEC LINEAR - STL-F*

PRODUCT DESCRIPTION

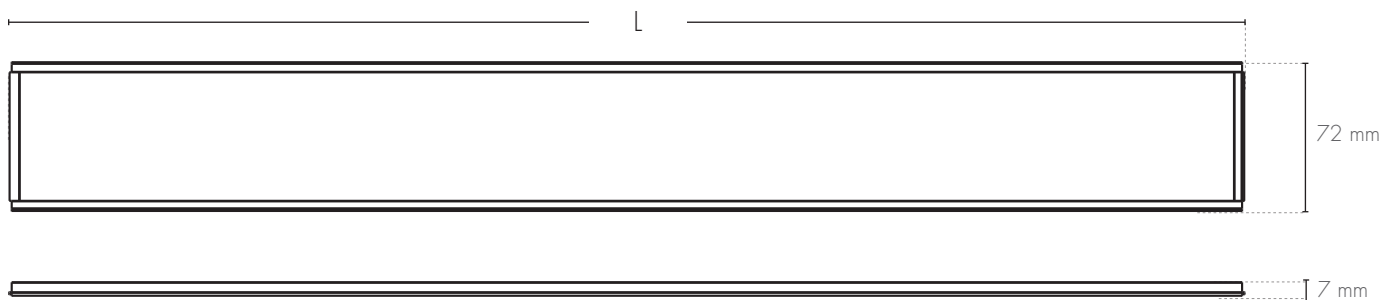


Decorative frame **STL-F** is a range of metal frames for channels in the Showertec Linear STL system. Frames are available in **AISI 316 stainless steel or in aluminum with Alu+ treatment**, in the same wide range of colors and finishes (*) as the covers (grids) of the Showertec Linear STL system, so as to create single-color tone-on-tone combinations or in two colors with tiles, covers or other bathroom elements. Decorative frame **STL-F** frames are made of four elements grouped by means of specific supports, through which it is easy to adjust the installation to tile thicknesses up to **20 mm**.

The STL-F frame is available in all sizes of the Showertec Linear STL system 600, 700, 800, 900, 1000, and 1200 mm.

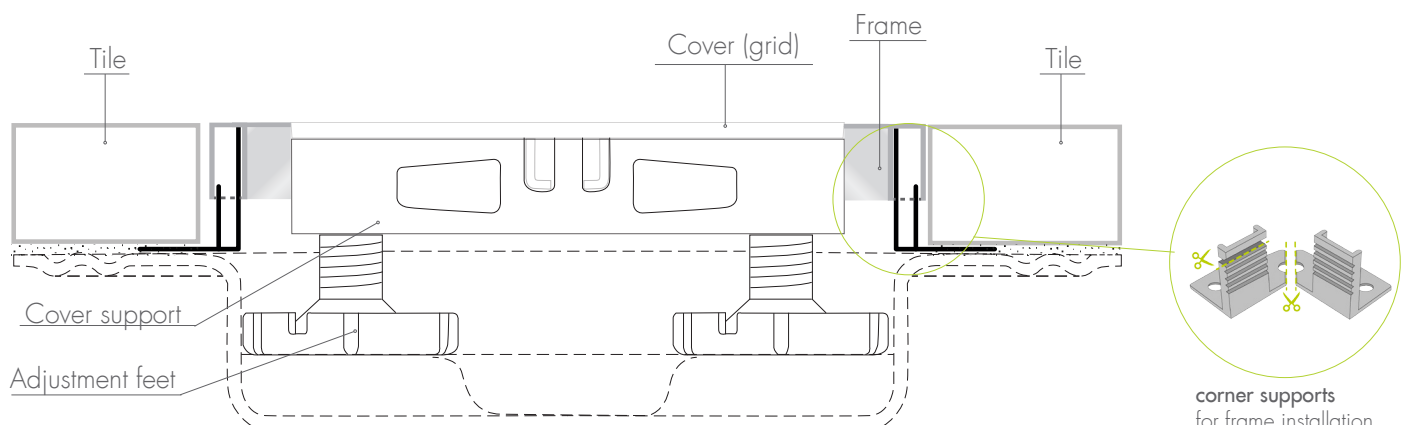
(*): the stainless steel frame is only available in the polished finish.

TECHNICAL DRAWINGS STL-F*



STL-F*, Frame decorative

L = Available lengths: 614 mm / 714 mm / 814 mm / 914 mm / 1014 mm / 1214 mm



STL-F* CODE - STAINLESS STEEL

| Article | Length (mm) | Description | pc■ | Pkg DxD (mm) |
|------------|-------------|--|------|--------------|
| STL-F 600 | 614 | Frame in Stainless Steel AISI 316 - Polished | 1 pc | ø45 x 630 |
| STL-F 700 | 714 | Frame in Stainless Steel AISI 316 - Polished | 1 pc | ø45 x 730 |
| STL-F 800 | 814 | Frame in Stainless Steel AISI 316 - Polished | 1 pc | ø45 x 830 |
| STL-F 900 | 914 | Frame in Stainless Steel AISI 316 - Polished | 1 pc | ø45 x 930 |
| STL-F 1000 | 1014 | Frame in Stainless Steel AISI 316 - Polished | 1 pc | ø45 x1030 |
| STL-F 1200 | 1214 | Frame in Stainless Steel AISI 316 - Polished | 1 pc | ø45 x 1230 |

STL-F* CODE - ALUMINUM

ANODIZED ALUMINUM ALU+

| Article | Length (mm) | Description | pc■ | Pkg DxD (mm) |
|--------------|-------------|---|------|--------------|
| STL-F 600 * | 614 | Frame in Anodized Aluminum Alu+ - *AT/*AR/*AO | 1 pc | ø45 x 630 |
| STL-F 700 * | 714 | Frame in Anodized Aluminum Alu+ - *AT/*AR/*AO | 1 pc | ø45 x 730 |
| STL-F 800 * | 814 | Frame in Anodized Aluminum Alu+ - *AT/*AR/*AO | 1 pc | ø45 x 830 |
| STL-F 900 * | 914 | Frame in Anodized Aluminum Alu+ - *AT/*AR/*AO | 1 pc | ø45 x 930 |
| STL-F 1000 * | 1014 | Frame in Anodized Aluminum Alu+ - *AT/*AR/*AO | 1 pc | ø45 x1030 |
| STL-F 1200 * | 1214 | Frame in Anodized Aluminum Alu+ - *AT/*AR/*AO | 1 pc | ø45 x 1230 |

Finishes: *AT = Titanium ■ / *AR = Copper ■ / *AO = Gold ■

BRIGHT POLISHED BRUSHED ALUMINUM ALU+

| Article | Length (mm) | Description | pc■ | Pkg DxD (mm) |
|--------------|-------------|---|------|--------------|
| STL-F 600 * | 614 | Frame in Bright pol. Brushed Alu+ - *ASSB/*ATSB/*ARSB/*AOSB | 1 pc | ø45 x 630 |
| STL-F 700 * | 714 | Frame in Bright pol. Brushed Alu+ - *ASSB/*ATSB/*ARSB/*AOSB | 1 pc | ø45 x 730 |
| STL-F 800 * | 814 | Frame in Bright pol. Brushed Alu+ - *ASSB/*ATSB/*ARSB/*AOSB | 1 pc | ø45 x 830 |
| STL-F 900 * | 914 | Frame in Bright pol. Brushed Alu+ - *ASSB/*ATSB/*ARSB/*AOSB | 1 pc | ø45 x 930 |
| STL-F 1000 * | 1014 | Frame in Bright pol. Brushed Alu+ - *ASSB/*ATSB/*ARSB/*AOSB | 1 pc | ø45 x1030 |
| STL-F 1200 * | 1214 | Frame in Bright pol. Brushed Alu+ - *ASSB/*ATSB/*ARSB/*AOSB | 1 pc | ø45 x 1230 |

Finishes: *ASSB = Chrome ■ / *ATSB = Titanium ■ / *ARSB = Copper ■ / *AOSB = Gold ■

BRIGHT POLISHED ALUMINUM ALU+

| Article | Length (mm) | Description | pc■ | Pkg DxD (mm) |
|--------------|-------------|--|------|--------------|
| STL-F 600 * | 614 | Frame in Bright polished Aluminum Alu+ - *AORB | 1 pc | ø45 x 630 |
| STL-F 700 * | 714 | Frame in Bright polished Aluminum Alu+ - *AORB | 1 pc | ø45 x 730 |
| STL-F 800 * | 814 | Frame in Bright polished Aluminum Alu+ - *AORB | 1 pc | ø45 x 830 |
| STL-F 900 * | 914 | Frame in Bright polished Aluminum Alu+ - *AORB | 1 pc | ø45 x 930 |
| STL-F 1000 * | 1014 | Frame in Bright polished Aluminum Alu+ - *AORB | 1 pc | ø45 x1030 |
| STL-F 1200 * | 1214 | Frame in Bright polished Aluminum Alu+ - *AORB | 1 pc | ø45 x 1230 |

Finishes: *AORB = Pink Gold ■

BRUSHED ALUMINUM ALU+

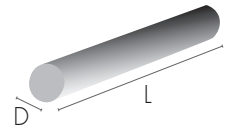
| Article | Length (mm) | Description | pc■ | Pkg DxD (mm) |
|--------------|-------------|--|------|--------------|
| STL-F 600 * | 614 | Frame in Brushed Aluminum Alu+ - *AGRS/*AMSB | 1 pc | ø45 x 630 |
| STL-F 700 * | 714 | Frame in Brushed Aluminum Alu+ - *AGRS/*AMSB | 1 pc | ø45 x 730 |
| STL-F 800 * | 814 | Frame in Brushed Aluminum Alu+ - *AGRS/*AMSB | 1 pc | ø45 x 830 |
| STL-F 900 * | 914 | Frame in Brushed Aluminum Alu+ - *AGRS/*AMSB | 1 pc | ø45 x 930 |
| STL-F 1000 * | 1014 | Frame in Brushed Aluminum Alu+ - *AGRS/*AMSB | 1 pc | ø45 x1030 |
| STL-F 1200 * | 1214 | Frame in Brushed Aluminum Alu+ - *AGRS/*AMSB | 1 pc | ø45 x 1230 |

Finishes: *AGRS = Graphite ■ / *AMSB = Antique Bronze ■

POWDER COATED ALUMINUM ALU+

| Article | Length (mm) | Description | pc | Pkg D x L (mm) |
|--------------|-------------|---|------|----------------|
| STL-F 600 * | 614 | Frame in Powder coated Aluminum Alu+ - *AM11/*A65 | 1 pc | ø45 x 630 |
| STL-F 700 * | 714 | Frame in Powder coated Aluminum Alu+ - *AM11/*A65 | 1 pc | ø45 x 730 |
| STL-F 800 * | 814 | Frame in Powder coated Aluminum Alu+ - *AM11/*A65 | 1 pc | ø45 x 830 |
| STL-F 900 * | 914 | Frame in Powder coated Aluminum Alu+ - *AM11/*A65 | 1 pc | ø45 x 930 |
| STL-F 1000 * | 1014 | Frame in Powder coated Aluminum Alu+ - *AM11/*A65 | 1 pc | ø45 x 1030 |
| STL-F 1200 * | 1214 | Frame in Powder coated Aluminum Alu+ - *AM11/*A65 | 1 pc | ø45 x 1230 |

Finishes: *AM11 = Matt White  / *A65 = Embossed Matt Black 



FRAME DECORTIVE FEATURES AND ADVANTAGES



Our **stainless steel frames** are made with **AISI 316**, top-notch material for its anti-corrosion properties even in marine or industrial environments with very aggressive agents.



The Aluminum frames are made with **ALU+ treatment**, which guarantees high corrosion resistance and is commonly used in the naval sector.



Frames may be freely combined with **covers (grids)**, in any **color combination**.



Support pedestals for the installation of the Frame, adaptable according to the tile height.



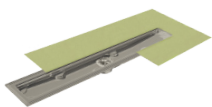
The edge underneath allows to **align the tile and maintain a correct and uniform distance** between the tile and the cover



A single piece for **lateral and corner frame support**

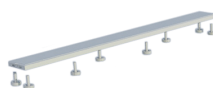
OTHER COMPONENTS

DRAIN, COVER and TRAY



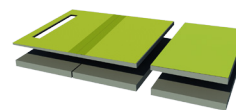
BODY

- Horizontal drain and siphon
- Vertical drain



COVER

- Tileable grid
- Invisible grid
- 16 finishes



TRAY

- Sloped trays
- Extensions
- Risers
- Ramp

Profilitec S.p.A.
Via Scotte, 3 - 36033 Isola Vicentina (Vicenza), ITALY
Tel: +39 0444 268311
e-mail: profilitec@profilitec.com (ITA)

Profilitec Corp.
472 Meeting Street, Suite C, No. 301 -
Charleston, SC 29403, USA
Ph: +1 855 290 9591
e-mail: customerservice@profilitec.com