

SYSTEM DESCRIPTION

Showertec Linear is a range of linear channels, 100% made in Italy, for floor-level, barrier-free showers. The channel is made of three elements: **Body** (channel body), **Cover** (removable and adjustable grids), and **Frame** (optional). This feature boosts aesthetic combinations, as Cover and Frame are two separate elements, which can be combined. To complete the system, you'll find the **Tray** that is **pre-sloped (2% slope)**, available in several sizes. Ready to be tiled.

SHOWERTEC LINEAR - STL-FW

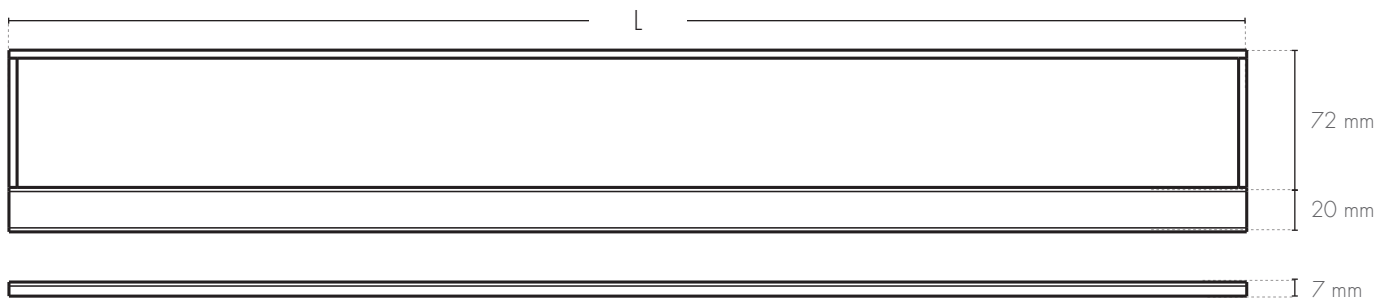
PRODUCT DESCRIPTION



Wall Frame **STL-FW** is a version of the **STL-F** series frame conceived for the flush with the wall installation of the channel. Wall Frame **STL-FW** is made in **AISI 316 stainless steel** and is suitable for tile thicknesses up to 20 mm. For the correct installation, specific supports were designed to allow the correct distancing, alignment and leveling between the frame and the cover (grid). For the installation of the wall element adjusting the inserted EPS is enough.

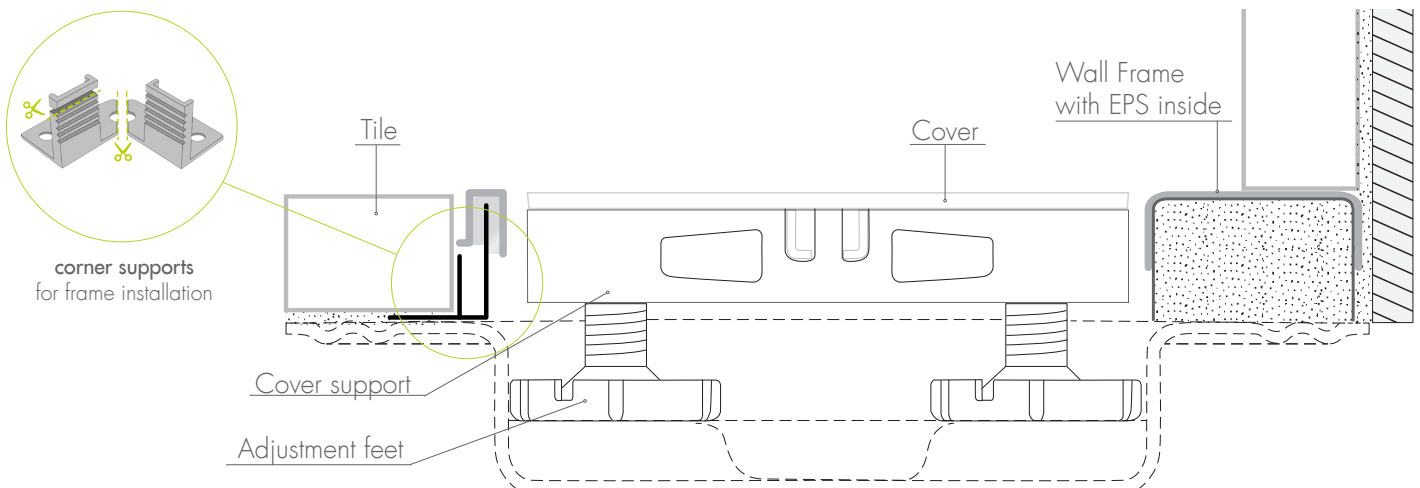
Wall Frame **STL-FW** frame is designed for sizes in the Showertec Linear STL system, 600, 700, 800, 900, 1000, and 1200 mm.

TECHNICAL DRAWINGS STL-FW



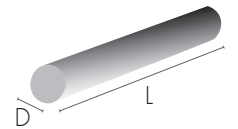
STL-FW, Wall Frame decorative

L = Available lengths: 614 mm / 714 mm / 814 mm / 914 mm / 1014 mm / 1214 mm



STL-FW CODE - STAINLESS STEEL

Article	Length (mm)	Description	pc	Pkg DxL (mm)
STL-FW 600 ILM	614	Flush wall frame in Stainless Steel AISI 316 - Polished	1 pc	ø60 x 630
STL-FW 700 ILM	714	Flush wall frame in Stainless Steel AISI 316 - Polished	1 pc	ø60 x 730
STL-FW 800 ILM	814	Flush wall frame in Stainless Steel AISI 316 - Polished	1 pc	ø60 x 830
STL-FW 900 ILM	914	Flush wall frame in Stainless Steel AISI 316 - Polished	1 pc	ø60 x 930
STL-FW 1000 ILM	1014	Flush wall frame in Stainless Steel AISI 316 - Polished	1 pc	ø60 x 1030
STL-FW 1200 ILM	1214	Flush wall frame in Stainless Steel AISI 316 - Polished	1 pc	ø60 x 1230



WALL FRAME FEATURES AND ADVANTAGES



Our **stainless steel frames** are made with **AISI 316**, top-notch material for its anti-corrosion properties even in marine or industrial environments with very aggressive agents.



EPS support inserted in the wall frame profile, adaptable according to the tile height.



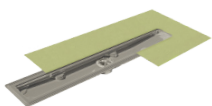
Frames may be freely combined with **covers (grids)**, in any **color combination**.



Frame supports to facilitate an even installation on covers (grids) and floor.

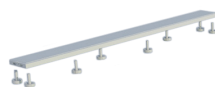
OTHER COMPONENTS

DRAIN, COVER and TRAY



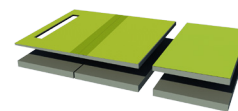
BODY

- Horizontal drain and siphon
- Vertical drain



COVER

- Tileable grid
- Invisible grid
- 16 finishes



TRAY

- Sloped trays
- Extensions
- Risers
- Ramp

Profilitec S.p.A.
Via Scotte, 3 - 36033 Isola Vicentina (Vicenza), ITALY
Tel: +39 0444 268311
e-mail: profilitec@profilitec.com (ITA)

Profilitec Corp.
472 Meeting Street, Suite C, No. 301 -
Charleston, SC 29403, USA
Ph: +1 855 290 9591
e-mail: customerservice@profilitec.com

