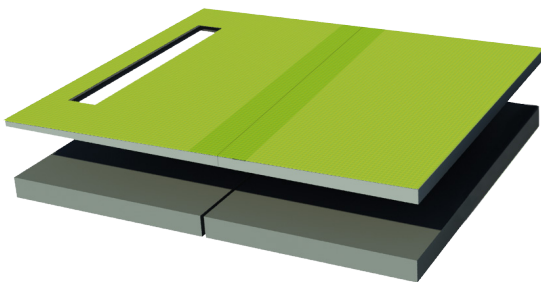


SYSTEM DESCRIPTION

Showertec Linear is a range of linear channels, 100% made in Italy, for floor-level, barrier-free showers. The channel is made of three elements: **Body** (raceway body), **cover** (removable and adjustable grids), and **frame** (optional). This feature boosts aesthetic combinations, as Cover and Frame are two separate elements, which can be combined. To complete the system, you'll find **2% pre-sloped shower trays range Tray**, available in several sizes. Ready to be tiled.

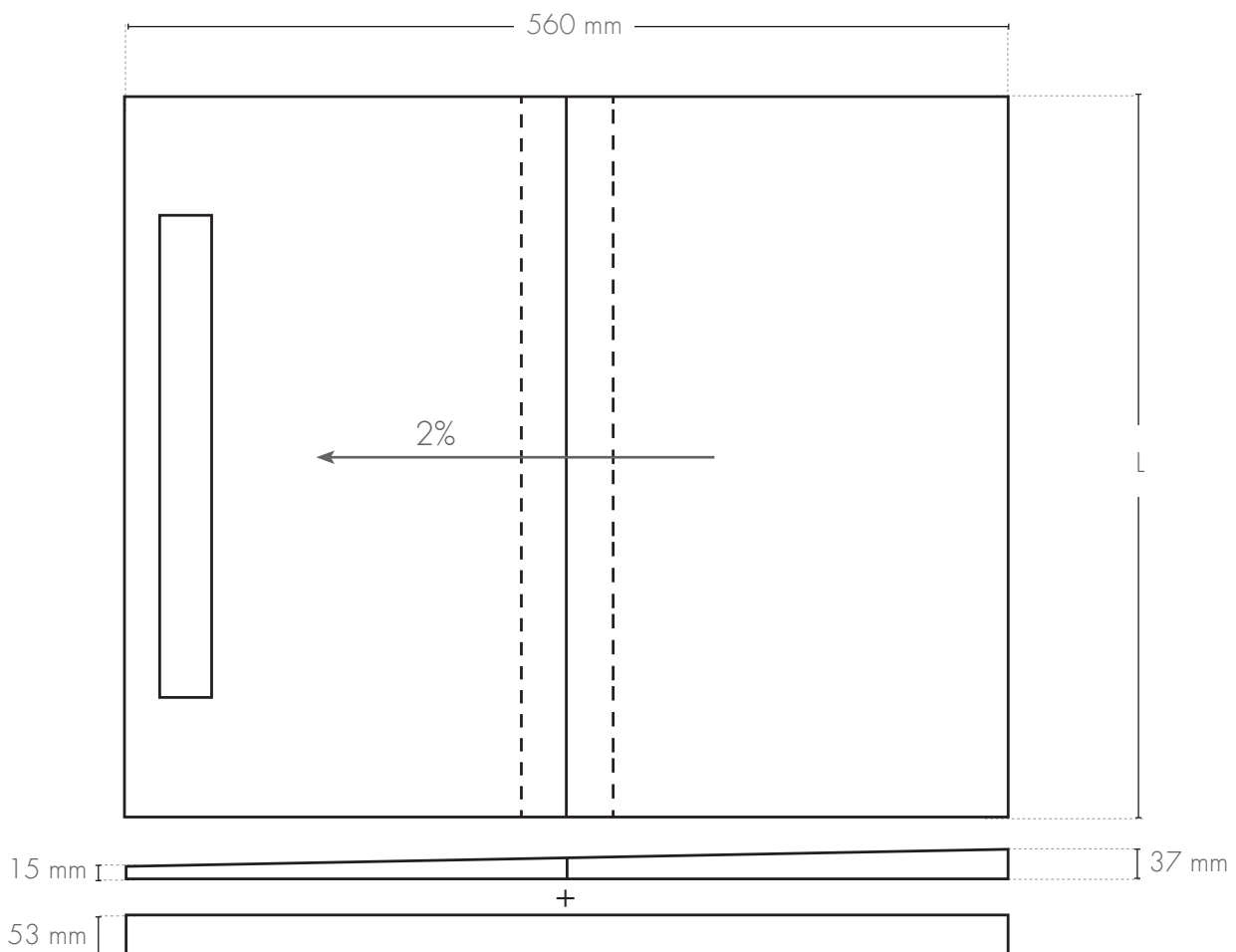
SHOWERTEC LINEAR - STL-TRAY-R

PRODUCT DESCRIPTION



Showertec STL-TRAY-R is a line of pre-sloped shower trays with riser, compatible with Showertec Linear **STL BS** and Showertec Linear **STL BV** and **STL BC** combined with a riser (height from 68 mm to 90 mm). They are made of waterproof material and thanks to the reinforcement grid and the honeycomb surface finish they are very resistant and allow a solid bond between the cement glue and the tile. Available in 91/112 cm and 132/112 cm versions, they can be combined with **EXT extensions** (1/56 cm and 132/56 cm).

TECHNICAL DRAWINGS STL-TRAY-R

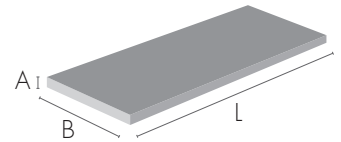


L = Available widths: 910 mm / 1320 mm

STL-TRAY-R, Waterproof shower tray with raised panel

STL-TRAY-R CODE

Article	Length (mm)	Description	pc	Pkg AxBxL (mm)
STL-TRAY91/112R	910 x 1120	Waterproof shower tray with raised panel	1 pc	176x600x954
STL-TRAY132/112R	1320 x 1120	Waterproof shower tray with raised panel	1 pc	176x600x1350



TECHNICAL FEATURES

Thermal conductivity (for XPS foam): $0.04 \text{ m} / 0.035 \text{ W} / \text{mK} = 1.143 \text{ m}^2\text{K} / \text{W}$,

Resistance to low/high temperatures: $-20^\circ\text{C} / +80^\circ\text{C}$ ($-4^\circ\text{F} / 176^\circ\text{F}$)

Waterproof: ASTM E331

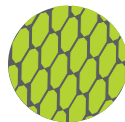
Can be cut on size

Extendible with the accessory Extension

TRAY-R FEATURES AND ADVANTAGES



The TRAYs and EXT extensions are waterproof and a fully-fledged shield against any infiltration.



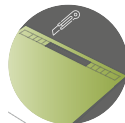
Fiber-reinforced concrete makes the TRAYs and the extension EXT more resistant, durable and improves the grip of glues.



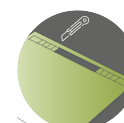
The TRAYs and EXT extensions are waterproof and a fully-fledged shield against any infiltration.



Wide range of accessories for more versatility. Raised panels, extensions and ramps are also available.



Pre-cut indications marked on Trays, ideal to adapt the drain system hole to the width of the channel.



Can be easily cut with a cutter or a jigsaw

OTHER COMPONENTS

ACCESSORIES for TRAY



TRAY

- Pre-sloped waterproof tray



EXTENSION

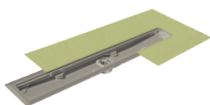
- Tray extension



RAMP

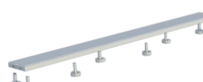
- Sloped ramp for renovations

BODY, COVER and FRAME



BODY

- Horizontal drain and siphon
- Vertical drain



COVER

- Tileable grid
- Invisible grid
- 16 finishes



FRAME

- Flush with the wall frame
- 13 finishes in Steel and Alu+

Profilitec S.p.A.
Via Scotte, 3 - 36033 Isola Vicentina (Vicenza), ITALY
Tel: +39 0444 268311
e-mail: profilitec@profilitec.com (ITA)

Profilitec Corp.
472 Meeting Street, Suite C, No. 301 -
Charleston, SC 29403, USA
Ph: +1 855 290 9591
e-mail: customerservice@profilitec.com

 **profilitec**
positive profile