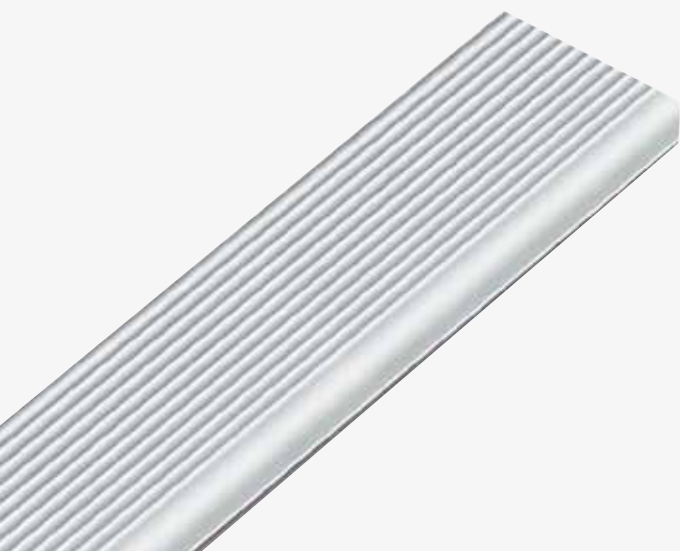
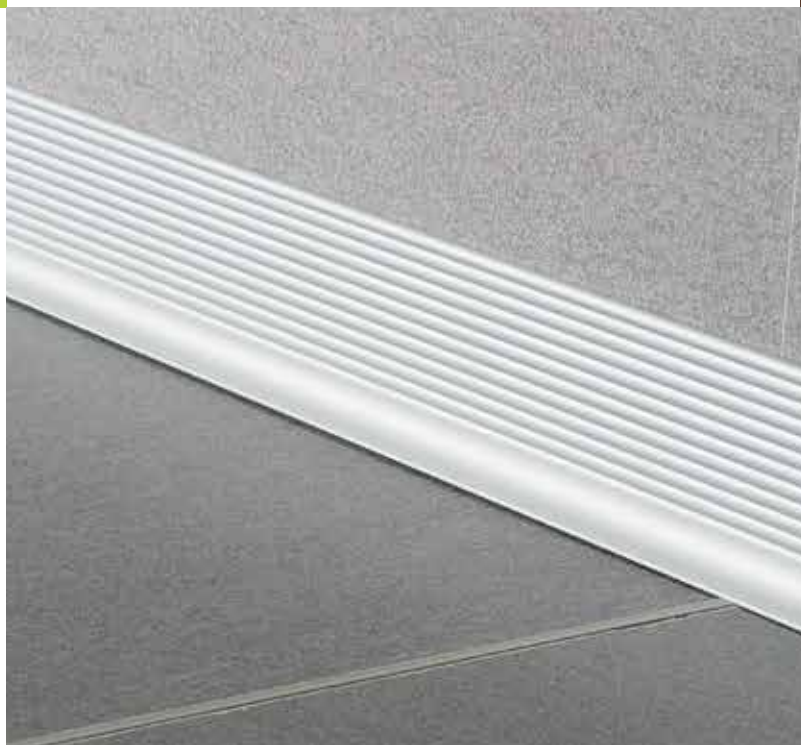
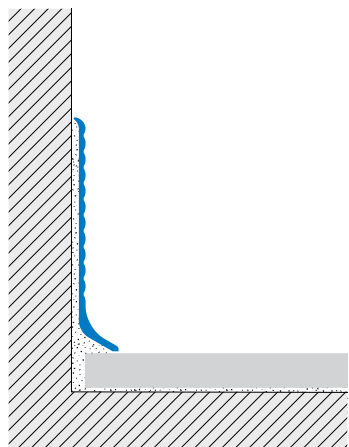
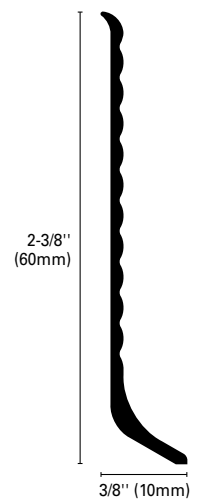
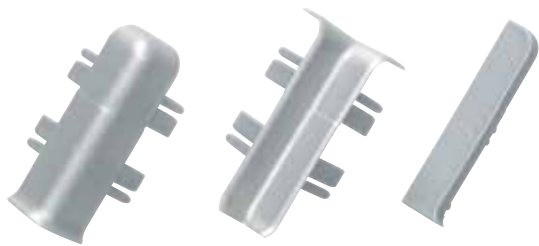




Decorative, aluminum **BASEBOARD BAR** profiles with a distinctive horizontal ribbing are designed to coordinate with typical kitchen toe kicks. Durable and elegant, its slightly rounded edges seal the baseboard onto the floor covering. The protruding lip on the bottom of the profile conceals the perimeter movement joint. Available with and without adhesive.

## skirting **BAR**





#### SKIRTING BAR-AS\* Silver Anodized Aluminum

This extruded profile has a silver coating which offers good resistance to oxidation and mechanical

	H = in	mm	Art.		
Material:	2-3/8	60	BAR	600	ASN
Extruded Anodized Aluminum	2-3/8	60	BAR	600	ASA
Finish: Silver (AS)					
Length: 8'10" (2.70meters)					
Height: 2-3/8" (60mm)					

#### BASEBOARD ENDCAPS AND JOINT PIECES

Endcap, internal / external corner joint pieces in silver synthetic resin.

H = 2-3/4" (70mm)

Kit includes: 1 right + 1 left

	Description	Art.		
Material:	Internal corner	BAI	-	PS
Polypropylene	External corner	BAE	-	PS
Finish: Silver (PS)	End cap	BAT	-	PS
Height: 2-3/8" (60mm)				