

SYSTEM DESCRIPTION

Showertec Linear is a range of linear channels, 100% made in Italy, for floor-level, barrier-free showers. The channel is made of three elements: **Body** (channel body), **Cover** (removable and adjustable grids), and **Frame** (optional). This feature boosts aesthetic combinations, as Cover and Frame are two separate elements, which can be combined. To complete the system, you'll find the **Tray** that is **pre-sloped (2% slope)**, available in several sizes. Ready to be tiled.

SHOWERTEC LINEAR - STL-FW

PRODUCT DESCRIPTION

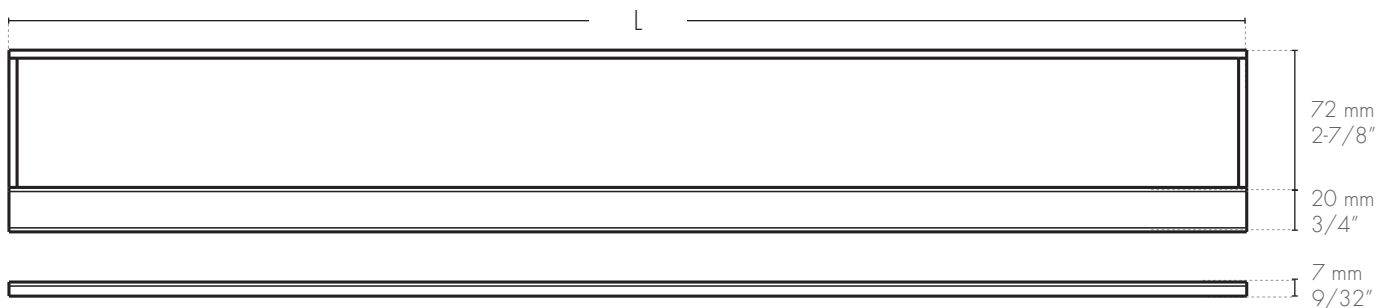


Wall Frame **STL-FW** is a version of the **STL-F** series frame conceived for the flush with the wall installation of the channel. Wall Frame **STL-FW** is made in **AISI 316 stainless steel** and is suitable for tile thicknesses up to 3/4" or 20 mm.

For the correct installation, specific supports were designed to allow the correct distancing, alignment and leveling between the frame and the cover (grid). For the installation of the wall element adjusting the inserted EPS is enough.

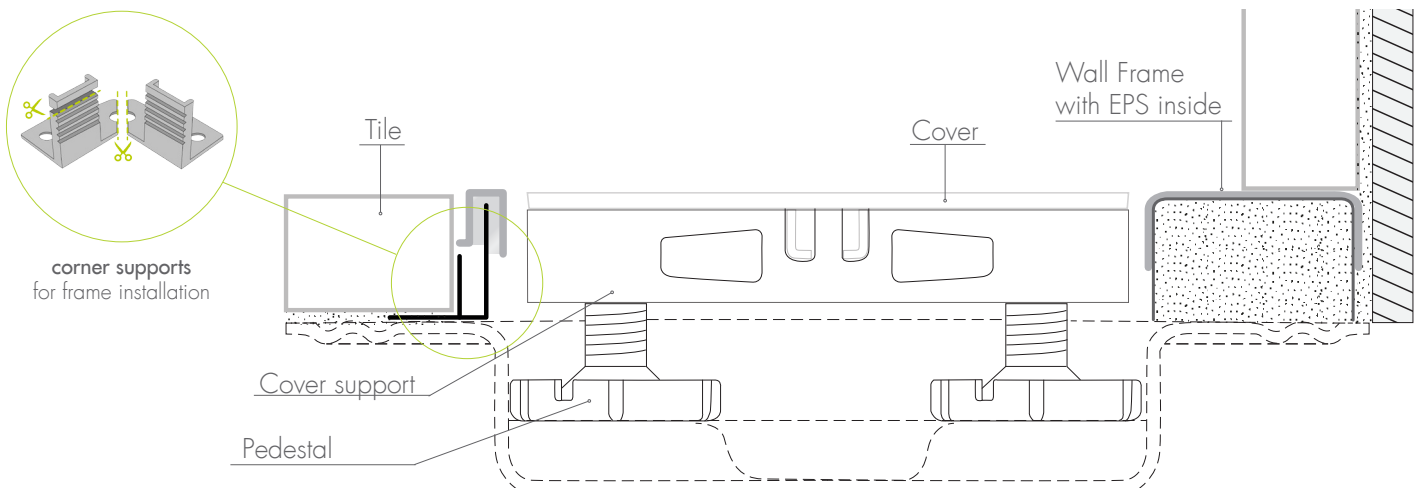
Wall Frame **STL-FW** is designed for sizes in the Showertec Linear STL system, (600, 700, 800, 900, 1000, and 1200 mm; 23-5/8" - 27-9/16" - 31-1/2" - 35-7/16" - 39-3/8" - 47-1/4").

TECHNICAL DRAWINGS STL-FW



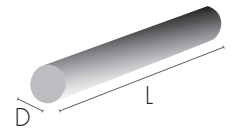
STL-FW, Wall Frame decorative

L = Available lengths: 614 mm / 714 mm / 814 mm / 914 mm / 1014 mm / 1214 mm
28-7/64" - 32-3/64" - 35-63/64" - 39-59/64" - 47-51/64"



STL-FW CODE - STAINLESS STEEL

Article	Length (mm - in)	Description	pc	Pkg DxDL (mm)	Pkg DxDL (inches)
STL-FW 600 ILM	614 - 24-11/64	Wall frame in Stainless Steel AISI 316 - Polished	1 pc	ø60 x 630	ø2-3/8 x 24-51/64
STL-FW 700 ILM	714 - 28-7/64	Wall frame in Stainless Steel AISI 316 - Polished	1 pc	ø60 x 730	ø2-3/8 x 28-47/64
STL-FW 800 ILM	814 - 32-3/64	Wall frame in Stainless Steel AISI 316 - Polished	1 pc	ø60 x 830	ø2-3/8 x 32-43/64
STL-FW 900 ILM	914 - 35-63/64	Wall frame in Stainless Steel AISI 316 - Polished	1 pc	ø60 x 930	ø2-3/8 x 36-39/64
STL-FW 1000 ILM	1014 - 39-59/64	Wall frame in Stainless Steel AISI 316 - Polished	1 pc	ø60 x 1030	ø2-3/8 x 40-35/64
STL-FW 1200 ILM	1214 - 47-51/64	Wall frame in Stainless Steel AISI 316 - Polished	1 pc	ø60 x 1230	ø2-3/8 x 48-27/64



WALL FRAME FEATURES AND ADVANTAGES



Our **stainless steel frames** are made with **AISI 316**, top-notch material for its anti-corrosion properties even in marine or industrial environments with very aggressive agents.



EPS support inserted in the wall frame profile, adaptable according to the tile height.



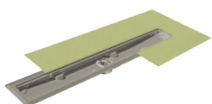
Frames may be freely combined with **covers**, in any **color combination**.



Frame supports to facilitate an even installation on covers and floor.

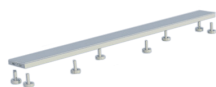
OTHER COMPONENTS

DRAIN, COVER and TRAY



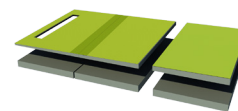
BODY

- Central drain
- Off-center drain



COVER

- Tileable grid
- Invisible grid
- 16 finishes



TRAY

- Sloped trays
- Extensions
- Risers
- Ramp

Profilitec S.p.A.
Via Scotte, 3 - 36033 Isola Vicentina (Vicenza), ITALY
Tel: +39 0444 268311
e-mail: profilitec@profilitec.com (ITA)

Profilitec Corp.
472 Meeting Street, Suite C, No. 301 -
Charleston, SC 29403, USA
Ph: +1 855 290 9591
e-mail: customerservice@profilitec.com

