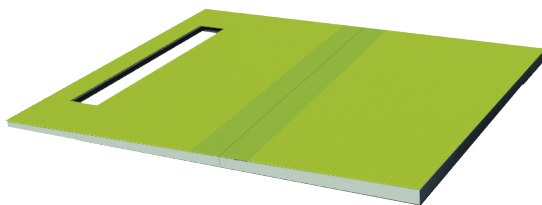


**SYSTEM DESCRIPTION**

Showertec Linear is a range of linear channels, 100% made in Italy, for floor-level, barrier-free showers. The channel is made of three elements: **Body** (channel body), **Cover** (removable and adjustable grids), and **Frame** (optional). This feature boosts aesthetic combinations, as Cover and Frame are two separate elements, which can be combined. To complete the system, you'll find the Tray that is **pre-sloped (2% slope)**, available in several sizes. Ready to be tiled.

**SHOWERTEC LINEAR - STL-TRAY**

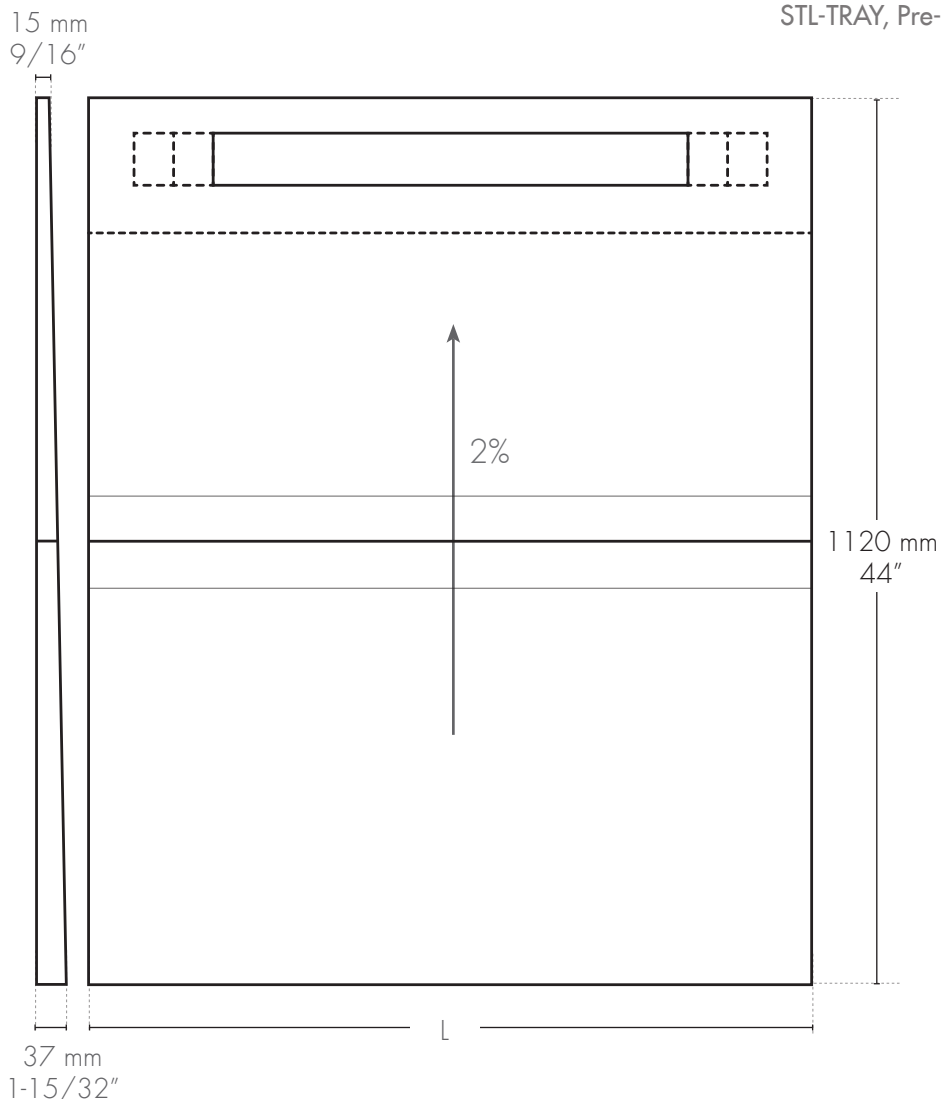
**PRODUCT DESCRIPTION**



**STL-TRAY** is a pre-sloped shower tray for the channels in the Showertec Linear STL channel series. It is made of waterproof material and coated with a layer of embossed fiber-cement which increases resistance and allows a tight grip of tile glues. **STL-TRAY** is available in two widths (36"/91 cm or 52"/132 cm) and can be completed with extensions (see **STL-EXT**) and ramps (see **STL-RAMP**).

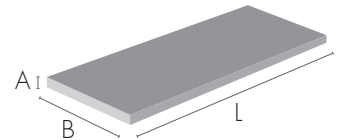
**TECHNICAL DRAWINGS STL-TRAY**

STL-TRAY, Pre-sloped waterproof TRAY



STL-TRAY CODE

Article	Length (mm - in)	Description	pc ■	Pkg AxBxL (mm)	Pkg AxBxL (inches)
STL-TRAY91/112	910x1120 - 36x44	Fiber-reinforced cementitious <b>bonding surface</b>	1 pc	70x600x954	3x23-5/8x37-9/16
STL-TRAY132/112	1320 x 1120 - 52x44	Fiber-reinforced cementitious <b>bonding surface</b>	1 pc	70x600x1360	3x23-5/8x53-35/64



TECHNICAL FEATURES

Thermal conductivity (for XPS foam):  $0.04 \text{ m} / 0.035 \text{ W} / \text{mK} = 1.143 \text{ m}^2\text{K} / \text{W}$ ,

Resistance to low/high temperatures:  $-20^\circ\text{C} / +80^\circ\text{C}$  ( $-4^\circ\text{F} / 176^\circ\text{F}$ )

Waterproof: ASTM E331

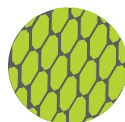
Can be cut on size

Extensible with the accessory Extension

RAMP FEATURES AND ADVANTAGES



The **Trays** are waterproof and a fully-fledged shield against any infiltration.



Fiber-reinforced cementitious layer makes the **Trays** more resistant, durable and improves the grip of thin-set.



The **Trays** are waterproof and a fully-fledged shield against any infiltration.



Wide range of accessories for more versatility. **Raised panels, extensions and ramps** are also available.



**Pre-cut indications marked** on Trays, ideal to adapt the drain system hole to the width of the channel.

OTHER COMPONENTS

ACCESSORIES for TRAY

EXTENSION



- Tray extension

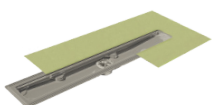
RAMP



- Sloped ramp for renovations

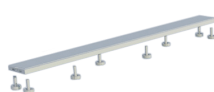
BODY, COVER and FRAME

BODY



- Central drain  
- Off-center drain

COVER



- Tileable grid  
- Invisible grid  
- 16 finishes

FRAME



- Wall frame  
- 13 finishes in Steel and Alu+