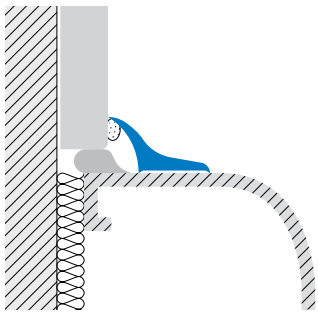




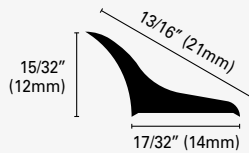
**SANITEC SB** profiles resolve wall-to-wall or wall-to-floor transitions. The cove-shaped profile is easy to clean and offers a hygienic solution to internal corners in kitchen countertops, shower stalls and bathtubs, replacing silicone caulking that inevitably yellows and absorbs dirt over time. Installed with self-adhesive strips or silicone.

# sanitec™ SB



## SANITEC SB 20 A\* Self-Adhesive Varnished Aluminum / Silver Anodized Aluminum

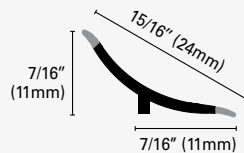
This varnished or silver anodized aluminum profile is UV and scratch resistant, tolerant to corrosion, most domestic cleaning products and weathering. Also available without adhesive (A\*N).



	AxB = in	mm	Art.		Ades.	Non Ades.
Material: Powder coated Aluminum / Extruded Anodized Aluminum	15/32x17/32 15/32x17/32	12x14 12x14	SB	20	A11A ASA	A11N ASN
Finish: Pure white / Silver						
Length: 8'10" (2.70meters)						

## SANITEC SB 24 P 11 Solid Extruded Synthetic Resin

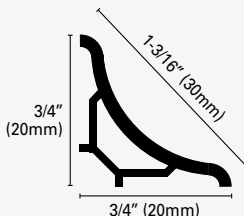
Extruded as solid synthetic resin, the color is fully embedded in the body of the profile and suitable in diverse design settings. This profile is particularly suitable for acrylic bathtubs as the softer, transparent external lips of the profile provide excellent adhesion.



	AxB = in	mm	Art.		
Material: Resintop	7/16x7/16	11x11	SB	24	P11
Color: Pure White with transparent lips					
Length: 8'10" (2.70meters)					

## SANITEC SB 30 P\* Solid Extruded Synthetic Resin

Extruded as solid synthetic resin, the color is fully embedded in the body of the profile and suitable in diverse design settings. The profile is scratch resistant, tolerant to mechanical impact and most domestic cleaning products.



Material: Resintop	3/4x3/4 3/4x3/4 3/4x3/4	20x20 20x20 20x20	SB	30	P11 P22 P30
Colors: Pure White Light Grey / Beige					
Length: 8'10" (2.70meters)					